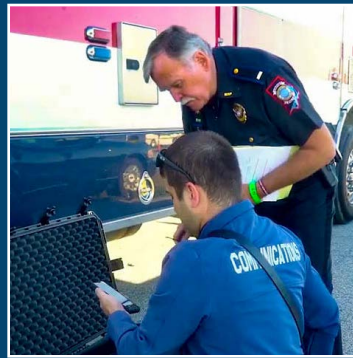


FirstNet and Emergency Management



As emergency managers contend with increasingly complex emergencies, many are turning to technology to aid in their work.

FirstNet, the nationwide public safety broadband network, provides a reliable, resilient, highly available wireless connection to help public safety officials with planning, preparedness, response, and recovery.

Emergency managers nationwide rely on FirstNet and its suite of innovative tools, features, and services, including:

- High-volume data streaming between the Emergency Operations Center and the field
- Improved tracking of vehicles, equipment, personnel, evacuees, etc.
- Ability to monitor network status in nearly real time, including alerts and detailed view of coverage in areas where responders are active or being deployed
- Network priority features for non-public safety partners that need to collaborate with first responders during an event
- A catalog of vetted, secure public safety and emergency management apps
- More than 100 FirstNet-dedicated deployables available at no cost to FirstNet subscribers
- Integration with Land Mobile Radio networks
- A common communications platform for local mutual aid and Emergency Management Assistance Compact (EMAC) missions

The FirstNet network supports:

Mission critical applications

- Incident management/situational awareness platforms
- GIS/mapping
- Weather/traffic
- Video streaming and resource tracking in real time
- Mission Critical Push-to-Talk
- Access to deployable assets at no cost

Administrative applications

- Office tools (PDF, Word)
- Records management
- Reporting
- Database access
- Medical references

Secure connectivity

- Strong user and device authentication
- Application VPN
- Secure mobile gateway
- Mobile Device Management (MDM) policy controls
- End-to-end encryption



“In 2018, we swapped over to FirstNet and immediately saw how beneficial it was going to be to not only our planning and preparation, but also our response, mitigation, and recovery.”

Shawn Rogers
Director of Cherokee County
Emergency Management
Agency, Alabama

Quality of service, priority, and preemption

FirstNet’s high-quality Band 14 spectrum is reserved for public safety. Because of FirstNet’s built-in priority and preemption capabilities, first responders stay connected even when commercial networks are overloaded.

Local control for users and applications

Through an easy-to-use dashboard, FirstNet subscribers can uplift specified users or groups over congested networks when an emergency or planned event occurs. This feature helps emergency managers stay connected with traditional public safety agencies as well as the extended community of support organizations, including public works, utilities, government agencies, and schools.

Network status view

The Network Status Tool is designed to increase situational awareness of the status of the FirstNet network. Emergency managers can use the tool to assess conditions that may affect the network, identify potential impacts to operations, and guide decisions on the use of resources.

Pre-planning, training, and post-incident reviews

Agencies can engage with the First Responder Network Authority (FirstNet Authority) in facilitated discussions to work through pre-incident planning, exercise support, and post-incident or event reviews. These services, which are free of charge to FirstNet subscribers, aim to help emergency managers integrate broadband into public safety operations.

Additional info:

- For use cases and testimonials, visit [FirstNet.gov/FirstNetinAction](https://www.firstnet.gov/FirstNetinAction).
- Get best practices and tips for integrating broadband into emergency management at [FirstNet.gov/EMGuide](https://www.firstnet.gov/EMGuide).
- Learn more about the First Responder Network Authority at [FirstNet.gov](https://www.firstnet.gov).
- Learn about FirstNet products and services on [FirstNet.com](https://www.firstnet.com).

For more info about how FirstNet serves the emergency management community, visit [FirstNet.gov/EM](https://www.firstnet.gov/EM).